

DF453 / 454 Installation Instructions

Product Code: DF453/4



Contents:

1. 1 x fountain and bottle filler body
2. 2 x waste fittings (discard the gratings part 2a)
3. 2 x flexible waste pipes
4. 1 x waste tee
5. 1 x bubbler tap
6. 1 x bottle filling tap
7. 1 x tap hole blank (not shown)

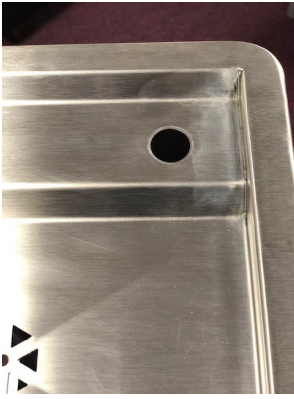
Step 1:
Fit the two waste fittings (part 2) to the two waste pressings in the drinking fountain bowl and the bottle filling recess. Discard the stainless steel grating part 2a. Place the screw through the central hole and tighten the plastic waste body to the underside of the waste pressings.



Step 2:
Screw the two flexible waste pipes (part 3) to the two waste fittings.
Fit the other ends of the two flexible waste pipes into the waste tee (part 4).



Step 3:
Fit the bubbler tap (part 5) to the 22mm hole in the top of the fountain.



Step 4:
Fit the bottle filling tap (part 6) to the 22mm hole in the rear of the bottle filling recess with the washer and brass backnut included. Fit the blue indexes to the tap button.



Step 4A:
Fit the tap hole blank to the hole in the top of the bottle filling recess.

Step 5:
If fitting against a wall remove and discard the rear panel (if supplied). If to be used as a pedestal unit retain the rear panel. Fix the unit to the floor and rear wall with appropriate wall fixings (not supplied).

Step 6:
Fit the lock to the access door.

Step 7:
Connect the buildings water supply to the bubbler tap (1/2" connection) and the bottle filling tap (1/2" connection). Remember to flush any new pipework to remove debris before connecting to the tap and bubbler. An isolation valve (not included) should be fitted to the water supply before it connects to the unit.
Connect the waste tee to the buildings waste pipework. A proprietary water seal trap should be installed where the waste joins the buildings waste pipework (not included)
Test for leaks and adjust the water flow to the bubbler tap with the integral adjustment screw. We advise fitting an inline Y strainer or filter to the water inlet pipework to protect the tap and bubbler from water borne debris.

Step 8:
Test for leaks on the water inlets and waste outlets. Make sure door and rear panel (if used) are securely attached to the unit.

Step 9
Remove any protective coating from the stainless steel, clean thoroughly with warm soapy water to remove any residues from the protective coating and the installation.